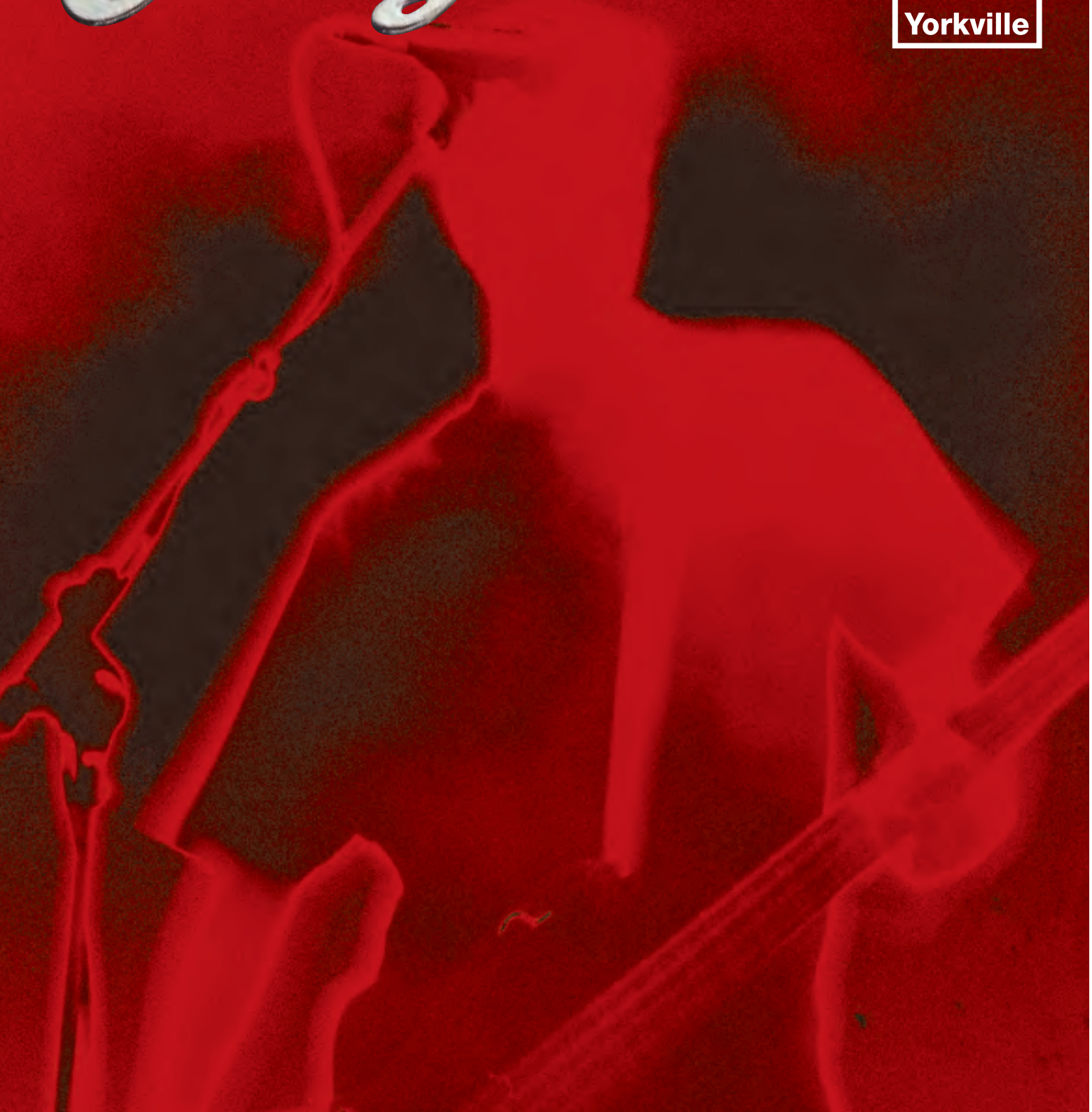


INSTRUMENT AMPLIFICATION

GUITAR ★ BASS ★ KEYBOARD

Traynor



T R A Y N O R A M P S . C O M

TRAYNOR ALL-TUBE GUITAR AMPLIFIERS

- 4-5** YCS100 / YCS412
- 6** YCV20WR
- 7** YCV40 / YCV40WR / YCV40T
YCX12 / YCX12WR 1 x 12 Closed Back Extension Cabinets
- 8** YCV50Blue / YCX12Blue
- 9** YCV80 / YCV80Q
YCX212 2 x 12 Closed Back Extension Cabinet

TRAYNOR DYNAGAIN SERIES

- 10-11** DG10 / DG15 / DG15R
DG30D / DG60R

TRAYNOR INTERNATIONAL SERIES

- 12** StudioMate10 / GuitarMate15 / GuitarMate20
- 13** ReverbMate30 / ReverbMate40 / BassMate10 / BassMate25

TRAYNOR ACOUSTICMASTER ACOUSTIC INSTRUMENT AMPLIFIERS

- 14-15** AM50T / AM100T / AM150T

YORKVILLE BASSMASTER XM SERIES

- 16** XM50C / XM100C / XM200C / XM200TC

YORKVILLE BASSMASTER XS SERIES

- 17** XS400C / XS400TC
- 18** XS400H / XS800H

TRAYNOR ALL-TUBE BASS AMPLIFIERS

- 19** YBA200

YORKVILLE XC BASS EXTENSION CABINETS

- 20-21** XC210 / XC410 / XC808 / XC115 / XC115X / YBX1510

KEYBOARD AMPLIFIERS & POWERED MONITORS

- 22-23** K2 / K4
- 24-25** 50KB / 50KW / 100KB / 100KW / 200KB
- 26** TVM10

ACCESSORIES

- 27** Optional Accessories



index

Traynor

CUSTOM SPECIAL 100



TRAYNORAMPS.COM

Traynor CUSTOM SPECIAL 100

The Traynor Custom Special 100 Head and YCS412 just might be the ultimate half-stack head and cabinet combination. Built for the road, this true three-channel 100-watt head and 4x12 cabinet is the stuff guitar player's dreams are made of.

The YCS100's true three-channel architecture offers full control of each and every channel. No shared EQ's or pseudo 'channels' here. Every channel on the Traynor YCS100 has individual gain and volume controls, a full three band EQ, boost level and its own effects return and reverb settings.

Powered by four EL34's the Traynor YCS100 has two user switchable power levels, a true 100-watt class-AB mode, and a more manageable 30-watt class-A configuration ideal for recording or rehearsal. Four 12AX7A's make up the all tube pre-amp stage. To ensure maximum versatility, the Traynor YCS100 has an in-line pre-amp send / power amp return for in-line effects, and a side chain effects send with individual effects return level controls for every channel.

The YCS100's master section includes a Master Volume, Presence and Resonance controls. The unique Resonance control, when used with a high quality and responsive loudspeaker enclosure, like the Traynor YCS412, allows the player to dial in the exact bass response from their rig that they

want to hear. It's easy to get any sound from a tight and punchy tone to a looser, more 'vintage-tube' sound with the Traynor YCS100. The Resonance control actually controls the damping factor of the amplifier's output stage, and allows the player to take full advantage of the cabinet's 'tone'.

An XLR direct output with speaker compensation ensures the Traynor half-stack can be easily fed to a live PA without having to mic the cabinet. The headphone output has speaker compensation and its own level control, independent of the amplifiers master volume.



A solid plywood cabinet construction with all-metal chassis protects the Traynor YCS100's glass epoxy circuit boards, tubes and wiring, ensuring years of road-readiness and unmatched reliability.

The four-button footswitch included with the Custom Special 100 head allows instant access to any of the three channels with a single stomp. The fourth button controls a global lead boost for solos.





YCS100 SPECIFICATIONS:

Model	YCS100
Type	Tube Guitar Amplifier
Power @ min. impedance (Watts)	2-ohms (30-watt mode) 4-ohms (100-watt mode)
Input Channels	3
Channel 1 - inputs	1/4 inch phone
Channel 1 - controls	Gain, Volume, Treble, Mid, Bass, Reverb, Effects
Channel 1 - switches	Boost, Scoop, Modern
Channel 2 - controls	Gain, Volume, Treble, Mid, Bass, Reverb, Effects
Channel 2 - switches	Boost, Scoop, Modern
Channel 3 - controls	Gain, Volume, Treble, Mid, Bass, Reverb, Effects
Channel 3 - switches	Boost, Bright, Modern
Channel Switching	Yes
Master Volume Control	Yes
Main Tone Controls	Resonance, Presence
Line Out (type / configuration)	Speaker Compensated XLR Balanced
Effects Volume	Separate levels on each channel
Effects Loop / Location	Yes / Rear
Effects Footswitch / Function	Yes / Channel Select, Boost
Internal Reverb / Effects	Accutronics Spring Reverb
External speaker output / location	Rear (Dual selectable impedances)
Headphone Jack	Yes
Other Features	All-tube design with four EL34EH, four 12AX7A Premium tubes, Standby Switch, Auto tube matching circuit, DC filaments on preamp tubes, Speaker defeat switch
Dimensions (DWH, inches)	11.5 x 26.5 x 10.5
Dimensions (DWH, cm)	29.25 x 67.5 x 26.75
Weight (lbs / kg)	44 / 20

Specifications subject to change without notice.

TRAYNOR YCS412 4X12 CABINET

The Celestion Vintage30 loaded Traynor YCS412 has been designed from the ground up to be the perfect companion for the Traynor YCS100 all-tube guitar head. Solid birch plywood cabinet construction delivers unmatched tone and ensures a long rattle-free life, - even when played at the volumes this cabinet is expected to produce night after night. Built for the road, the North American made YCS412 has an all-metal grille to protect the speakers, integrated all metal bar handles and removable casters (included).

A versatile wiring scheme allows the Traynor YCS412 to operate at 4 or 16 ohms mono, or as a 2 x 8-ohm stereo configuration for use with any stereo guitar preamp / power amp combination.



SPECIFICATIONS:

Model	YCS412
Speaker Configuration	4 x 12-inch Celestion Vintage30
Cabinet Impedance (ohms)	4 or 16 (mono) / 2 x 8 (stereo)
Physical Inputs	2 x 1/4" phone jack
Cabinet Construction	Solid 11mm Birch Plywood (5/8")
Dimensions WxHxD (in)	30 x 29 x 13.5 (11" deep @ top)
Dimensions WxHxD (cm)	76 x 73 x 34 (27cm deep @ top)
Weight (lb / kg)	TBA

Specifications subject to change without notice.



Traynor

CUSTOM VALVE SERIES

North American built all-tube Traynor Custom Valve Series guitar amplifiers deliver maximum versatility and superior tube tone in your choice of combo amps. Careful attention to detail during the design stage and quality component selection during manufacturing ensures years of unmatched dependability and a superior tone.

Traynor Custom Valve Series guitar amplifiers are made with a solid plywood cabinet construction, frankly because we believe MDF (medium density fiberboard) or particleboard can't deliver great guitar tone or a long rattle-free life. A full metal grille under our grille cloths protect the Celestion™ speakers used in all Custom Valve amplifiers, while maintaining a truly vintage look. Heavy gauge all-metal box chassis protect electronic components in every model.

An exclusive auto-matching tube circuit maintains a true bias balance as tubes age, ensuring hum free performance through the entire tube life. Replacement tubes never require biasing, balancing or adjustment making tube swaps a simple 'plug in and play' procedure in Custom Valve Series guitar amps. The constant hum and noise usually associated with an all-tube amplifier design is further reduced by Traynor's use of a DC powered filament supply on preamp tube circuitry.

All Traynor Custom Valve Series amplifiers are covered with a two year unlimited warranty*.

*Unlimited warranty valid in the United States and Canada only.



Dual Color Status Light - on



Plywood Cabinet Construction



Dual Color Status Light - standby



Full Metal Grille

CUSTOM VALVE SERIES FEATURES:

- Solid all-plywood cabinet construction for outstanding reliability and tone.
- Quality component selection
- Heavy gauge perforated all metal grille with cloth cover to protect speakers.
- All-metal box chassis
- All tube audio signal path
- Auto balancing bias supply
- DC powered filament supply on preamp tubes for reduced hum.
- Fully regulated power supply with tube rectifier emulation.
- Dual color power / standby status light.
- Conservatively driven output stage for extended tube life.
- Speaker compensated XLR direct outputs & headphone jacks on select models (YCV20WR, YCV80 and YCV80Q)
- Tuned optional extension cabinets for most models

CUSTOM VALVE 20WR

The Traynor Custom Valve 20WR amplifier delivers 'boutique' quality and tone without the 'boutique' price. Perfect for any studio session or live stage where 15 'tube-watts' is more than enough power, but full functionality from the amp is required. This North American built all-tube class-A design fulfills the need of every guitar player seeking versatility, a full set of features and superior tube tone in a smaller, more manageable amplifier package.

Unlike competitive amplifiers in this class, the YCV20WR offers two footswitchable channels with true independent gain and volume controls on each. A master 3-band EQ with bright switch on the clean channel and a footswitchable boost on the lead channel are standard equipment. Ideal for recording, the YCV20WR offers an XLR balanced line output for direct connect to PA or recording console, a headphone jack for private practice and internal speaker defeat switch for increased flexibility in the studio.

The Wine Red Nubtex covering and 'oatmeal' colored grille cloth used on the Custom Valve 20WR offer a classic and unique look for the stage or studio. Its all-tube class-A design is further enhanced by the use of an Accutronics spring reverb and a 12-inch Celestion™ G12M Greenback loudspeaker. Although often thought of as a 'jazzier' amp, the YCV20WR is often used to drive a 4x12 extension cabinet for super-saturated tone in recording situations.

The YCV20WR is a Class-A design driven by three 12AX7A pre-amp tubes and two EL34's in the power stage. A unique DC Filament and regulated power supply design ensures a clean quiet operation not normally associated with tube amplifiers.



CUSTOM VALVE 40



The Traynor Custom Valve 40 (YCV40) is the workhorse of the Custom Valve Series. Flexible and easy to use, this single 12-inch 40-watt combo uses three 12AX7WA pre-amp tubes, two 5881WXT power tubes, a Celestion™ Red Label speaker and a true Accutronics long-spring reverb as the basis of its solid vintage sound.

The three basic tones (clean, crunch and overdrive) are easily defined with two, discrete footswitchable channels with fully separate EQ's for each. An additional footswitchable 'boost' function adds drive to the lead channel making the amp ideal for virtually any gigging situation.

Although the YCV40 has a tremendous amount of gain it remains virtually hum free. Experienced professional users will appreciate the auto-matching tube circuit that maintains bias balance as tubes age and the DC filaments on the preamp tubes that all but eliminate extraneous tube-amp noise.



Guitar Player
Editors' Pick Award.

YCX12 EXTENSION CABINET

The Traynor YCX12 single 12-inch Celestion™ loaded, closed back extension cabinet is the perfect companion for the YCV40. Tuned to add not only more volume, but also more bottom end, the YCX12 is the ideal extension cab both sonically and acoustically for the 40-watt combo.



CUSTOM VALVE 40T

Perfect for the player who prefers the sound and control of 10's, the Traynor Custom Valve 40T (YCV40T) delivers of the features of the 1x12-inch Custom Valve 40 in a 2x10-inch loaded package.



The lower impedance of the two Celestion™ 10-inch speakers used in the YCV40T creates a more saturated tone and more 'spread' than the single 12-inch combo can deliver, making it a more desirable amplifier / speaker configuration for a number of live and studio applications.

Like the Custom Valve 40, the YCV40T uses 12AX7WA pre-amp tubes, 5881WXT power tubes, Accutronics spring reverb, two fully discrete footswitchable channels and hum reducing electronics.



CUSTOM VALVE 40WR

The Traynor Custom Valve 40WR (YCV40WR) is the perfect blend of tone and image. Although using the same high quality design and construction as the YCV40 and YCV40T, the Celestion™ Vintage30 1 x 12-inch loaded YCV40WR is an amplifier in a class by itself.

Unlike its black and silver cousins, the YCV40WR is covered in a Wine Red Nubtex and has a rich oatmeal-brown grille cloth. This combined with the Celestion™ Vintage30 speaker used in this forty-watt model gives the YCV40WR a rich 'boutique' look, sound and feel.

The combination of the YCV40WR's all-tube power and Celestion Vintage30 is both classic and versatile. The three basic tones (clean, crunch and overdrive) are easily defined in this amp, and it can deliver great tone at low levels as well as full stage volumes. Like the Custom Valve 40 and Custom Valve 40T, the YCV40WR uses 12AX7WA pre-amp tubes, 5881WXT power tubes, Accutronics spring reverb, two fully discrete footswitchable channels and hum reducing electronics.

YCX12WR EXTENSION CABINET

The closed back YCX12WR is the companion cabinet for the open back YCV40WR combo amp. Matching wine red Nubtex covering, oatmeal grille cloth complete the WR look while the 12-inch Celestion™ Vintage30 speaker housed in this closed back extension cabinet adds more tone and projection.



Traynor CUSTOM VALVE 50BLUE

The Custom Valve 50Blue is the darkest, and most 'Brit-sounding' guitar amplifier in the Custom Valve series. Unlike its cousins, the YCV40, 40WR or 40T, the YCV50Blue is powered by EL34s in the power stage, giving it added attitude and bite.

Two discrete footswitchable channels with fully separate EQs, ensure players can always find virtually any clean or lead tone needed for any gig. Auto-matching tube circuitry that maintains bias balance ensures hum free performance through the entire tube life.

The Traynor YCV50Blue takes full advantage of its solid plywood cabinet construction. MDF (medium density fiberboard) or particleboard amp cabinets can't deliver great tone or long-term reliability and since this is an amplifier made to be played, only the best construction and design would do.

Three 12AX7WA dual triode preamp tubes provide real tube front-end overdrive in the Custom Valve 50Blue. The Presence control typically seen on other amps in the Custom Valve Series has been removed from the YCV50Blue and replaced with a new master volume control, giving the player more flexibility with the clean channel and the ability to drive both lead and clean channels harder at a more livable playing volume.

The look of the Traynor Custom Valve 50Blue has been changed to reflect its new attitude. An all new dark blue Nubtex finish and all-black hardware on the solid plywood cabinet makes it clear that this amp means business. A full metal grille under the jet-black grille cloth protects the 12-inch Celestion™ Vintage30 speaker.

The rear mounted control panel is easy to access, yet recessed for protection. The use of glass epoxy circuit boards and a heavy gauge full box chassis construction ensure years of rugged reliability for the club or concert hall.



AMPLIFIER SPECIFICATIONS:

Model	YCV50Blue
Type	Tube Guitar Amplifier
Cabinet Impedance (Ohms)	8
Power @ min. impedance (Watts)	50
Minimum Impedance (Ohms)	4
Speaker Configuration - LF (Size / Power)	12 inch Celestion Vintage 30
Input Channels	2
Channel 1 - inputs	1/4 inch phone
Channel 1 - controls	Gain, Volume, Treble, Bass, Middle
Channel 1 - switches	Boost
Channel 2 - inputs	Shares ch 1 input
Channel 2 - controls	Volume, Treble, Bass, Middle
Channel 2 - switches	Channel Select, Brightness
Channel Switching	Yes
Master Volume Control	Yes
Line Out (type / configuration)	1/4 inch TRS / Rear (Effects Send)
Effects Volume	Yes
Effects Loop / Location	Yes / Rear
Effects Footswitch / Function	Yes / Channel Select, Boost
Internal Reverb / Effects	Acutronics Spring Reverb
External speaker output / location	1/4 inch / Bottom Chassis
Other Features	Standby Switch, Auto Tube-matching Circuit Preamp Tube - 3 x 12AX7WA Dual Triodes Power Amp Tube - 2 x EL34
Dimensions (DWH, inches)	9.5 x 23 x 18
Dimensions (DWH, cm)	24 x 58 x 46
Weight (lbs / kg)	50 / 23

Specifications subject to change without notice.



YCX12BLUE EXTENSION CABINET

When you need more of a good thing. The Traynor YCX12Blue single 12-inch Celestion™ Vintage30 loaded, closed back extension cabinet is the perfect companion for the Custom Valve 50Blue guitar amps. Tuned to add not only more volume, but also more bottom end, the YCX12Blue is the perfect match both sonically and acoustically for the YCV50Blue Traynor combo amp.

CUSTOM VALVE 80

The Traynor Custom Valve 80 (YCV80) is the most powerful combo amplifier in the Custom Valve Series. Flexible and easy to use, this fully loaded 80-watt combo uses three 12AX7WA pre-amp tubes, four 5881WXT power tubes, two Celestion™ 12-inch speakers and a true Accutronics long-spring reverb as the basis of its tone.

In addition to the independent channel EQ's, additional innovative tone shaping controls appear on the YCV80 that offer unprecedented sonic variety. A 'Scoop' switch on the lead channel adds body for much heavier, crunchier leads while the 'Expander' switch on the clean channel provides amazing new rhythm sounds often simulating an acoustic-like tone from an electric guitar.

The YCV80 employs Traynor's DynaSound direct output cabinet simulation on both the XLR direct line output and the stereo headphone output for a more authentic amp tone without the necessity to mic the cabinet live or in the studio. A speaker defeat switch is provided on the YCV80 for silent practice or silent direct recording.

Although the YCV80 has a tremendous amount of gain it remains virtually hum free. Experienced professional users will appreciate the auto-matching tube circuitry that maintains bias balance as tubes age and the DC filaments on the preamp tubes that all but eliminate extraneous tube-amp noise.



CUSTOM VALVE 80 (2X12")

CUSTOM VALVE 80Q

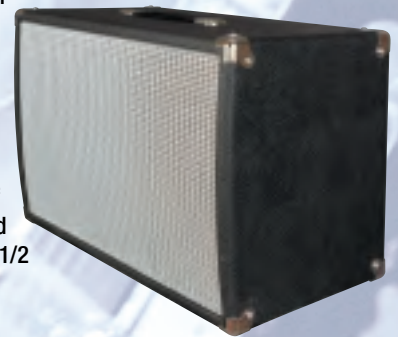
The Traynor Custom Valve 80Q could be the ultimate guitar amplifier for any player that prefers the sound of 10-inch speakers in a tube amp. Voiced to be a very different amplifier than its 2 x 12-inch loaded cousin, the YCV80Q has found a home with discriminating players in virtually any music genre.

Although the chassis both 80-watt Custom Valve combos look the same, the electronics have been tweaked in the YCV80Q to take full advantage of four Celestion™ 10-inch speakers used in this amp. Great care was taken to voice the YCV80Q for the player that prefers more traditional tube guitar tones. The 'scoop' function on the lead channel is less aggressive on the YCV80Q, than on the 2x12-inch YCV80, and the DynaSound direct / recording output has been tweaked to ensure the signal from the XLR output accurately reflects the tone shape and signature characteristics of a miked four-ten speaker cabinet. This could make the CustomValve 80Q the definitive guitar amp for classic rock, blues or country.

Like the YCV80 and YCV20WR, a speaker defeat switch is provided on the YCV80Q for silent practice or silent direct recording applications.

YCX212 EXTENSION CABINET

The Traynor YCX212 dual 12-inch Celestion™ loaded, closed back extension cabinet is the perfect companion for the Custom Valve 80 guitar amp. The closed back 2x12 extension cabinet under the open back combo amp gives the player the best of all worlds, making a YCV80 and YCX212 perhaps the perfect 1/2 stack guitar rig.



EXTENSION CABINET SPECIFICATIONS:

Model	YCX12	YCX12WR	YCX12BLUE	YCX212
Speaker Configuration	1 x Celestion 70/80	1 x Celestion Vintage30	1 x Celestion Vintage30	2 x Celestion 70/80
Cabinet Impedance (ohms)	8	8	8	4
Physical Inputs	2 x 1/4" phone jack	2 x 1/4" phone jack	2 x 1/4" phone jack	2 x 1/4" phone jack
Cabinet Construction	3/4" Plywood	3/4" Plywood	3/4" Plywood	3/4" Plywood
Dimensions (inches)	12 x 22.75 x 15	12 x 22.75 x 15	12 x 22.75 x 15	16 x 26.5 x 13
Dimensions (cm)	29 x 58 x 38	29 x 58 x 38	29 x 58 x 38	47 x 65 x 34
Weight (lb / kg)	31 / 14	34.5 / 15.7	34.5 / 15.7	41 / 20

AMPLIFIER SPECIFICATIONS:

Model	YCV20WR	YCV40 / YCV40WR	YCV40T	YCV80	YCV80Q
Preamp Tubes	3 x 12AX7A	3 x 12AX7A	3 x 12AX7A	3 x 12AX7A	3 x 12AX7A
Power amp Tubes	2 x 6BQ5	2 x 5881	2 x 5881	4 x 5881	4 x 5881
Speaker configuration	1 x 12" Celestion / 1 x 12" Celestion 612M Greenback	1 x Celestion 70/80 / 1 x 12" Celestion Vintage30	2 x 10" Celestion Tube10	2 x 12" Celestion 70/80	4 x 10" Celestion Tube10
Cabinet Impedance (ohms)	8	8	4	4	8
Minimum Amplifier Impedance (ohms)	4	4	4	2	2
Reverb	Accutronics® Spring Reverb	Accutronics® Spring Reverb	Accutronics® Spring Reverb	Accutronics® Spring Reverb	Accutronics® Spring Reverb
Physical Inputs	1 x 1/4" phone jack	1 x 1/4" phone jack	1 x 1/4" phone jack	1 x 1/4" phone jack	1 x 1/4" phone jack
Channel One Controls	Input Gain, Volume, Boost switch	Input Gain, Volume, Treble, Mid, Bass	Input Gain, Volume, Treble, Mid, Bass	Input Gain, Volume, Treble, Mid, Bass	Input Gain, Volume, Treble, Mid, Bass
Channel Two Controls	Input Gain, Volume, Bright switch	Volume, Treble, Mid, Bass	Volume, Treble, Mid, Bass	Volume, Treble, Mid, Bass	Volume, Treble, Mid, Bass
Tone Shaping Circuits / Tone Control	Master 3-band EQ	Ch1 - Boost / Ch 2 - Bright	Ch1 - Boost / Ch 2 - Bright	Ch1 - Boost, Scoop / Ch 2 - Bright, Expander	Ch1 - Boost, Scoop / Ch 2 - Bright, Expander
Line Outs	XLR Direct	1/4" TRS balanced out	1/4" TRS balanced out	Dynasound Speaker compensated XLR balanced out	Dynasound Speaker compensated XLR balanced out
Headphone Outs	Yes	none	none	Dynasound Speaker compensated 1/4" TRS Stereo	Dynasound Speaker compensated 1/4" TRS Stereo
Effect Loops	1 x Preamp Send & Power amp return	1 x Preamp Send & Power amp Return	1 x Preamp Send & Power amp Return	1 x Preamp Send & Power amp Return	1 x Preamp Send & Power amp Return
				1 x Parallel Effects loop w/ level controls	1 x Parallel Effects loop w/ level controls
Footswitch	Yes - Ch select / boost	Yes - Ch select / boost	Yes - Ch select / boost	Yes - Ch select / boost	Yes - Ch select / boost
Cabinet Construction	3/4" Plywood	3/4" Plywood	3/4" Plywood	3/4" Plywood	3/4" Plywood
Dimensions inches	9.5 x 18 x 17	9.5 x 23 x 18	9.5 x 23 x 18	9.5 x 26 x 20	9.5 x 26.5 x 25
Dimensions (cm)	24 x 47 x 43	24 x 58 x 46	24 x 58 x 46	24 x 67 x 51	24 x 67 x 65
Weight (lb / kg)	35 / 16	46 / 21 / 50 / 23	48 / 22	65 / 29	68 / 32

Specifications subject to change without notice.

*Unlimited Warranty valid in the United States and Canada only.

Traynor DYNAGAIN SERIES

Designed with the practicing musician in mind, the highly affordable new Traynor DynaGain Series guitar amplifiers deliver great tone and a full set of features in small, rugged and reliable packages.

Available in models ranging from a single channel 10-watt practice amp up to a fully featured 60-watt two-channel version, there's a solid-state Traynor DynaGain amplifier fitted for every player's need and budget. Additional rehearsal-friendly features like CD / line inputs and a headphone out with speaker defeat make the new DynaGain amplifiers the perfect practice companion.

Great care was taken during the design of the new DynaGain Series to create small format guitar amps that deliver a big overdrive tone. Professional quality Celestion™ speakers are used on all models in the line, including the smallest 10-watt DG10 and like all amplifiers in the Traynor line, the DG Series is covered by a full Two-Year Unlimited* Warranty.

**Two-Year Unlimited Warranty valid in Canada and U.S. only.*

DG10 10-WATT GUITAR AMP

The Traynor DynaGain DG10 delivers a full 10-watts through its high quality 8-inch Celestion™ speaker. Capable of delivering pristine clean tones or a searing overdrive at the touch of a switch, the DG10 is ready for any style of music. Perfect for the learning guitarist, the Traynor DG10 has RCA line input for quick connection of a CD or MP3 player allowing any play-along source to be mixed with the guitar. The 1/4-inch headphone jack (with speaker defeat) makes the Traynor DynaGain DG10 ideal amplifier for private practice.



DG15 / DG15R

15-WATT GUITAR AMPS

The Traynor DynaGain DG15 delivers a full 15-watts through its high quality 10-inch Celestion™ speaker. A two-channel design allows the player to switch between a pristine clean tone or a searing overdrive channel for awesome leads at the touch of a switch. Perfect for practice, the Traynor DG15 has RCA line input for quick connection of a CD or MP3 player allowing any play-along source to be mixed with the guitar. The 1/4-inch headphone jack (with speaker defeat) makes the Traynor DynaGain DG15 ideal amplifier for personal rehearsal. The Traynor DG15R combines all the features of the DG15 plus a spring reverb that adds a true vintage vibe to your tone pallet.



AMPLIFIER SPECIFICATIONS:

Model	DG10	DG15	DG15R	DG30D	DG60R
Configuration	Solid State	Solid State	Solid State	Solid State	Solid State
Watts	10	15	15	30	60
Speaker configuration	1 x 8"	1 x 10"	1 x 10"	1 x 10"	1 x 12"
Physical Inputs	1/4-inch / CD input	1/4-inch x 2 / CD input	1/4-inch x 2 / CD input	1/4-inch x 2 / CD input	1/4-inch x 2 / CD input
Channels	1 (Clean / Overdrive)	2	2	2	2
Channel One Controls	Volume / Drive (on / off)	Gain / Volume	Gain / Volume	Gain / Volume	Gain, Volume, bass, mid, treble, Boost Switch
Channel Two Controls	-	Volume	Volume	Volume	Gain, Volume, bass, mid, treble, Bright Switch
Master Tone Controls	Bass, Mid, Treble	Bass, Mid, Treble	Bass, Mid, Treble	Bass, Mid, Treble	Contour
Master Volume	-	Yes	Yes	Yes	Yes
Footswitchable	-	-	-	Yes / Channel	Yes / Channel / Boost / Reverb
Reverb	-	-	Spring	24-bit Digital	24-bit Digital
Effects	-	-	-	24-bit Digital (Chorus / Flange / Vibrato / Special)	-
Headphone Out	Yes	Yes	Yes	Yes	Yes
Dimensions (DxWxH inches)	7 x 15 x 13	9 x 18.5 x 14	9 x 18.5 x 14	10 x 21 x 17	9.75 x 24.5 x 18
Dimensions (DxWxH cm)	18 x 38 x 33	23 x 47 x 35.5	23 x 47 x 35.5	25.5 x 53 x 43	25 x 62 x 46
Weight (lb / kg)	15 / 7	22 / 10	23 / 10.5	30 / 13.5	39 / 17.6

Specifications subject to change without notice.

DG30D 30-WATT GUITAR AMP W/ DIGITAL EFFECTS

The Traynor DynaGain DG30D delivers a full 30-watts through its high quality 12-inch Celestion™ speaker, making it perfect for personal practice or rehearsals with the band. A two-channel design allows the player to switch between pristine clean to searing lead channel at the touch of a switch, or remotely with the optional AFS2 footswitch. The Traynor DG30D's 24-bit digital multi effects processor offers chorus, flange, vibrato and special effects. Perfect for practice, the Traynor DG30D has RCA line input for quick connection of a CD or MP3 player allowing any play-along source to be mixed with the guitar. The 1/4-inch headphone jack (with speaker defeat) makes the Traynor DynaGain DG30D ideal when private practice is preferred.



DG60R 60-WATT GUITAR AMP

Full of professional features any gigging musician can use, the Traynor DG60R offers two fully discrete footswitchable channels, an in line effects loop, 12-inch Celestion™ speaker and a digital reverb. Ideal for practice, but loud enough for most club gigs, the Traynor DynaGain60R Series employs three-stage dynamic tube emulation circuitry and a proprietary continuously variable 'Contour' control to provide unparalleled tube-like tone from a solid-state amplifier.

The Transconductive power amplifier design used exclusively in the DynaGain DG60R ensures the solid-state amplifier sounds just like a tube amp. Pushing the boundaries of modern technology, the DG60R delivers true dynamic gain control in the preamp to ensure the best tube emulation possible from an entirely solid-state circuit design. DynaSound speaker emulation on the headphone output, and speaker defeat switch makes the Traynor DynaGain DG60R amplifier the perfect amplifier for the practicing musician.



DynaGain DG60R Rear Panel



Traynor

INTERNATIONAL GUITAR SERIES

Traynor Guitar Mate™ & Reverb Mate™ combos are manufactured under the supervision of Yorkville Sound's engineering team. By design, they are the perfect for guitar players in need of a compact, cost effective practice rig.

Designed to be durable over the long haul, all Traynor International series amps include metal corners, non-skid rubber feet and vintage style rotary control knobs. Specific models feature separate gain and volume controls per channel, reverb, headphone and line-out jacks, an effects loop, and footswitchable controls.

All Traynor International Series amplifiers come with a comprehensive two-year, unlimited warranty*.

**Unlimited warranty valid in the United States and Canada only.*



STUDIO MATE 10

The smallest of the Traynor line, the 10 watt TSM10 provides a simple amplifier solution for the beginner guitarist. The TSM10's simple format features a 6-inch speaker, single volume control and overdrive switch, a 2-band EQ, and a 1/4-inch headphone output jack.



GUITAR MATE 15

The 15 watt TGM15 provides a solution for beginner guitarists who want big sound for a low price. The TGM15's simple format features a 8-inch speaker, single volume and overdrive switch, a 3-band EQ, and a 1/4-inch headphone output jack.



GUITAR MATE 20

The compact TGM20 is a perfect solution for guitarists who want practical versatility in a combo amplifier. The TGM20's solid 8-inch speaker packs 20 Watts of classic tone and features two footswitchable channels, a 3-band EQ, and built-in Chorus effect. With headphone output and line out capabilities, the TGM20 makes a great addition to home recording set-ups and bedroom practice situations.



REVERB MATE 30

This 30 watt compact combo features a 10-inch speaker, 2 channels with channel switching, and a 4-band EQ. With two separate gain and volume controls, guitarists can dial in a full range of tones and overdrives, can switch between channels with the aid of a footswitch, and can add classic spring reverb which is also footswitchable. Other features include headphone jack, line out, and an effects loop.



REVERB MATE 40

This full-featured stereo combo acts as the leader in the Traynor International Guitar amp line. With two 8-inch speakers pushing out 20 watts each, the affordable TRM40 has two channels, a 4-band EQ, tank reverb, and chorus. Both the channels and the chorus effect are selectable by a footswitch, making this amp a great all-in-one setup for both gigs and practice.

Traynor

INTERNATIONAL BASS SERIES

Traynor International Series BassMate™ amplifiers are built for the practicing musician.

Manufactured under the supervision of Yorkville Sound's engineering team, BassMate™ amplifiers are designed to be durable over the long haul. Like all products in the Traynor International Series line up, BassMate™ amplifiers are built with all metal corners, non-skid rubber feet and vintage style rotary control knobs. BassMate™ amplifiers include headphone jacks with internal speaker defeat making them ideal for rehearsal or private practice.

All Traynor International Series amplifiers come with a comprehensive two-year unlimited warranty*.

**Unlimited warranty valid in the United States and Canada only.*

BASS MATE 10

The Traynor TBM10 provides bass players with a compact and portable combo that produces great bass tone in an affordable package. Perfect for small jam sessions or practicing at home, the 10 watt combo offers a 8-inch speaker, a four-band EQ, headphone jack and 1/4-inch line output.



BASS MATE 25

This 25 watt dynamo provides unbelievable sound for its size thanks to its specially tuned enclosure and punchy 10-inch speaker. Featuring active bass, mid and treble tone controls, line out and headphone jack, its compact size and rugged construction make the Bass Mate 25 more than just a low-level practice amplifier. Upright bass players also appreciate its portability and the way it reinforces the natural resonant characteristics of their instrument.

AMPLIFIER SPECIFICATIONS:

Model	Studio Mate 10 TSM10	Guitar Mate 15 TGM15	Guitar Mate 20 TGM20	Reverb Mate 30 TRM30	Reverb Mate 40 TRM40	Bass Mate 10 TBM10	Bass Mate 25 TBM25
Type	Guitar	Guitar	Guitar	Guitar	Guitar	Bass	Bass
Power (Watts)	10	15	20	30	2x20	10	25
No. Channels	1	1	2	2	2	1	1
Channel Switching	overdrive switch	overdrive switch	yes	yes	yes	-	-
Speaker	6"	8"	8"	10"	2x8"	8"	10"
Equalization	2 band	3 band	3 band	4 band	4 band	4 band	5 band
Presence	-	-	-	yes	yes	yes	yes
Gain	-	-	2	2	2	-	-
Volume	1	1	2	2	2	1	1
Reverb	-	-	-	yes	yes	-	-
Chorus	-	-	yes	-	yes	-	-
Inputs	1	1	1	1	2	2	2
Headphone Out	yes	yes	yes	yes	yes	yes	yes
Line Out	-	-	yes	yes	yes/stereo	yes	yes
Effect Loop	-	-	-	yes	-	-	-
Footswitch Controls	-	-	channel	chan. & reverb	chan. & reverb	-	-
Front Panel Switches	-	-	chorus in/out	channel selector	channel & chorus in/out	-	low boost
WxDxH (in.)	11.5 x 8 x 13	11.5 x 8 x 13	14 x 8 x 14.5	15.5 x 8 x 17	20.5 x 8.5 x 14.5	13 x 8.5 x 14.5	16.3 x 16.5 x 8
WxDxH (cm)	29.2 x 20.3 x 33	29.2 x 20.3 x 33	35.6 x 20.3 x 37	38 x 20.3 x 43.2	52 x 21.6 x 37	33 x 21.5 x 38	41.5 x 42 x 20.5
Weight (lbs/kg)	13 / 6	13 / 6	18 / 8.2	21 / 9.5	34 / 15.4	18 / 8.2	24 / 10.9

Specifications subject to change without notice.

Traynor ACOUSTIC AMPS

For over forty years musicians have chosen Traynor instrument amplifiers knowing they deliver great tone with unmatched reliability. Perfect for the road, club and concert hall, Traynor AcousticMaster amplifiers carry on that tradition.

Designed from the ground up for the acoustic player, Traynor AcousticMaster amplifiers offer maximum tone shaping control and overall flexibility with a minimum of knobs and switches. AcousticMaster Series amplifiers use high-grade glass epoxy circuit boards, low noise metal film resistors and jacks with gold plated contacts to ensure maximum reliability from the electronics, while heavy-gauge curved metal speaker grilles, solid plywood cabinet construction and an all-new rugged wine red Nubtex covering protect the high quality internal components.

Rigorous factory testing and Yorkville's unbeatable Two-year Unlimited Warranty* ensures Traynor AcousticMaster amplifiers project your performance, night after night for years to come.

**Unlimited warranty valid in the United States and Canada only.*

ACOUSTICMASTER AM50T

Specially designed for the acoustic guitar player, the compact, lightweight, all-plywood 50-watt AcousticMaster AM50T amplifier sounds larger than it's size would lead you to expect. With a punchy custom-designed 8-inch woofer for naturally deep sound and a crisp Leson tweeter, the AM50T offers professional features and quality usually associated with amplifiers at a much higher price. The durable AM50T is uniquely versatile for standard combo upright or angled wedge stage monitor operation. Other features include two channels with 1/4-inch and XLR inputs, 2-band EQ plus selectable notch anti-feedback control, spring reverb and a professional quality balanced 1/4-inch line output (post-EQ/pre-EFX).



AMPLIFIER SPECIFICATIONS:

Model	AM100T	AM50T
Type	2-Way	2-Way
Power (Watts)	100	50
Speaker Configuration (Bass)	2x 6.5"	1x 8"
Tweeter Configuration (HF)	Motorola	LaSon
Internal Speaker Impedance (Ohms)	8	8
Input Channels	2	2
Indiv. Channel Gain	Yes	Yes
Master Volume	Yes	No
Channel Config. (P-Phone / X-XLR)	P / PX	P / PX
Input Sensitivity (ch1 / ch2)	100 mV / 1V	100 mV / 1V
Line Out	Bal. XLR	Bal. 1/4"
Line Out Sensitivity	1 Vrms	1 Vrms
Reverb	Digital, 16x 2 Banks	Spring
Effects Volume	Wet / Dry	Yes
Effects Loop / Location	Rear	NA
Effect Loop Footswitch	Rear	NA
Tone Controls	Low/Mid/High/Notch	Low/High/Notch
Notch Filter (ch1)	Tuneable, Defeatable	Tuneable, Defeatable
LED Indicators	Power, Clip, EFX Bank	Power, Clip
Dimensions (DxWxH - inches)	12 x 19 x 14	14 x 12 x 17
Dimensions (DxWxH - cm)	30 x 48 x 36	36 x 30 x 43
Weight (lbs/kg)	27.5 / 12.5	23 / 10.5

ACOUSTICMASTER AM100T

The two channel AcousticMaster AM100T delivers 100-watts of clean power through a pair of punchy 6.5-inch woofers and a crisp Motorola tweeter. The result is full and well-defined reproduction of acoustic nuances. The durable, lightweight AM100T is uniquely versatile for standard combo upright or angled wedge stage monitor operation. Along with a sturdy curved metal front grille and corner protectors, the cabinet is constructed from high quality plywood and is covered by heavy wine red Nubtex with a top mounted strap-handle.

The clearly labeled controls are simple to operate yet provide exceptional flexibility. Channel 1 has a single 1/4-inch input with a volume control marked with recommended levels for active and passive pickups, a 3-band equalizer with +/- 15 dB of cut/boost and a highly effective, defeatable and variable notch filter. Channel 2, with 1/4-inch jack and XLR inputs, features a gain control and effects defeat switch and is designed to be used as a microphone input, as an auxiliary instrument channel, or for line-level input sources such as a CD player. The digital effects section has two banks of 16 digital effects (defeatable on channel 2), controlled by a master level control labeled to show wet and dry mix levels. Rounding out the AM100T's ample feature set are clip LEDs for each channel as well as a rear-mounted EFX send/return loop, a balanced XLR line-out (pre-master/post-EQ/pre-EFX) and footswitch jacks.





FEATURES:

The AcousticMaster AM150T is a 150-watt stereo amplifier with two discrete input channels, digital effects and an XLR direct output for recording or direct feed for front of house PA. A 1/4-inch TRS balanced input jack is provided on each channel, and an additional XLR balanced input is available on channel two. Channel 1 has discrete input gain control, three-band EQ and adjustable notch filter ideal for piezo pickup systems. Although the second channel's XLR input is most likely used for a vocal microphone, that input can be used as a second feed from the advanced combination pickup systems now available, or for a microphone source from non-pickup equipped acoustic instruments.

The rear panel has a mono pre-EQ XLR direct output, as well as a pair of stereo post EQ and effects 1/4-inch TRS balanced outputs. An additional effects loop is provided.

ACOUSTICMASTER AM150T

The AcousticMaster AM150T is more micro-PA than instrument amplifier. Two 80-watt 8-inch speakers, one 60x40-degree 1.5-inch midrange horn and a piezo tweeter provide smooth even response and impressive volume. The mid frequency horn assembly is true 'PA loudspeaker' technology, providing great definition and projection of the vital midrange frequencies that define instrument tone and character. The dual 8-inch low frequency speakers provide tight and responsive bottom end.

Ideally suited to many applications, the AM150T can be your entire PA for a solo acoustic / vocal performances in small to medium sized venues. As a monitoring amplifier, the AM150T has more than enough volume and dispersion to fill even the largest most demanding stage layout. Useful on board digital effects and versatile EQ means no additional signal processing is required for your front of house acoustic guitar feed.

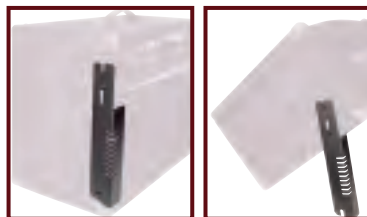
AMPLIFIER SPECIFICATIONS:

Model	AM150T
Type	3-Way
Power @ min. impedance (Watts)	150
Minimum Impedance (Ohms)	8
Burst Power - 2 cycle	170 Watts
Speaker Configuration	
LF (Size / Power)	2 x 8" / 80 Watts each Speaker
MF (Size / Power)	1 x 60 x 40 degree mid horn (1.5" throat)
HF (Size / Power)	Leson Tweeter
Input Channels	2
Channel 1 - inputs	1/4" TRS
Channel 1 - controls	Gain, Low, Mid, High, Frequency Notch Filter
Channel 1 - switches	Frequency Notch Filter Defeat
Channel 2 - inputs	1/4" TRS, XLR
Channel 2 - controls	Gain
Channel 2 - switches	Internal Effects Defeat
Master Volume Control	Yes
Input Sensitivity (mV)	ch 1=100, ch 2=1V
Line Out (type / configuration)	1 x XLR Pre-EQ / 2 x TRS Post EQ & Fx / Rear
Line Out Sensitivity (Vrms)	1
Effects Volume	Yes
Effects Loop / Location	Yes (ch 2 only) / Rear
Effects Footswitch / Function	Yes / Internal Effects Bypass
Internal Reverb / Effects	Digital Effects, 16 x 2 banks LED
Indicators	Power, Clip, EFX Bank
Dimensions (H W D, inches)	17 x 22 x 12
Dimensions (H W D, cm)	43 x 56 x 30
Weight (lbs / kg)	39 / 17

Specifications subject to change without notice.



AM150T Rear Panel



Optional TBL1 Tilt-Back Leg Available





BASSMASTER AMPLIFIERS



The North American built BassMaster™ XM Series combo bass amplifiers and cabinets define great tone and unmatched reliability over the long haul. Careful attention to detail during the design process, quality component selection, solid plywood cabinet construction, full metal perforated grilles and solid metal box chassis ensure roadworthiness and dependability needed by working musicians everywhere.

We're so sure of the design and our manufacturing prowess that we cover the BassMaster™ Series bass amplifiers with Yorkville's famous two year unlimited warranty*.

**Unlimited warranty valid in the United States and Canada only.*

XM50C

Ideal for rehearsal or personal stage monitoring, the ultra compact XM50C provides unbelievable sound for its size. RCA inputs for CD or MP3 player and a speaker defeating headphone jack make the XM50C the ideal practice companion. A tuned enclosure, punchy 10-inch speaker, active three-band tone controls, and an XLR balanced Line output make the XM50C perfect for the professional player needing small but effective on stage monitoring.



XM100C

The XM100C is Yorkville's most affordable single 15-inch speaker bass combo amplifier. Delivering 100 watts of clean power, its specially tuned compact enclosure yields amazing sound for players who demand the best in value and portability.

In addition to the three-band active EQ, the XM100C adds a scoop controlled tone shift that adds additional bottom end, increased high end presence and a notch in the midrange, creating a whole new tone pallet for the bassist.

The XM100C has an additional pair of RCA input jacks for CD / MP3 input, and a speaker defeating headphone jack for practice, and a selectable pre or post EQ XLR direct output, and effects loop for stage applications.



XM200C / XM200TC

The full sounding XM200 combo (15-inch / tweeter) and XM200T (2 x 10-inch / tweeter) combine ease of use with great sound. With 200 Watts of power and four-way active tone controls with a 'Scoop' function that offer simple yet effective tonal flexibility. Scoop is a user controlled tone shift that adds additional bottom end, increased high end presence and a notch in the midrange that creates a whole new tone pallet for the bassist.

Professional bass players will appreciate the fact the XLR balanced direct output is selectable pre or post EQ, and a tuner output has been added to the XM200's front panel. An overall system mute, switchable limiter, and extension cabinet output have been added to the XM200 combos as well.



XS SERIES

The XS400C and XS400TC hybrid bass amps deliver the best of all worlds. The innovative dual parallel tube input circuitry employed at the front end of the XS Series makes them possible the most versatile bass combos in their class. The unique XS Series pre-amp design allows the perfect blend of tube drive and tube clean bass tone, meaning as much grunge or as little 'tube warmth' can be added to the signal path as required while mixing in as much pure 'tube-clean tone' as required for unmatched definition and clarity. A solid-state power stage ensures ample pure clean power at the output.

In addition the five-band semi parametric EQ, both the XS400C and XS400TC combos have a continuously variable 'Scoop' control in the tone stack. The scoop sweeps from a flat frequency response to a mid-frequency dip at 300 Hz for a full 'hi-fi' bass tone. A compressor circuit with user definable threshold control has been added to the input circuit as well.

XS Series combos are built with a solid plywood cabinet construction. Heavy gauge perforated metal grilles protect the speaker components while an all-metal box chassis protects the electronic components ensuring unmatched long-term reliability.

Other professional features of the XS series combos include a front panel wet / dry control for the effects return, footswitchable tube overdrive, footswitchable effects return and a pre / post selectable XLR balanced Tube DI output. Speakon™ and 1/4-inch extension speaker outputs have been added for the addition of an external bass cabinet, like our popular XC210, XC410, and XC115.

A feature unique and solely exclusive to the XS400C and XS400TC is the 'Tweeter Auto Mute' switch located on the rear panel. Under normal operating conditions the tweeter will automatically shut off when the Tube Drive is activated, whether by front panel control or footswitch. This helps to reduce the harshness in the higher frequency range that is typical of an overdriven sound going through a tweeter. If you desire the tweeter to be active in the overdrive mode then simply press the switch to disengage the mute feature.

A front panel tuner / mute switch has been added to the XS series combos to silence the signal to the amplifier (and DI output) for silent tuning with the front panel mounted 1/4" tuner out jack.

FEATURES:

- 15-inch Eminence Driver (XS400C)
- Available in a 2 x Eminence 10-inch Drivers (XS400TC)
- Dual parallel tube drive / tube clean preamp circuitry with innovative blend control
- Footswitchable tube overdrive and effects Loop
- Wet/Dry blend on the effects loop return
- Five band EQ featuring a semi-parametric sweepable mid
- Unique 'Variable Contour' scoop function
- Pre/Post EQ selectable XLR balanced Tube DI output
- Speakon™ and 1/4" extension cabinet outputs
- Front panel mute switch for silent tuning with 1/4" tuner out jack
- Switchable Limiter at the output stage
- Proprietary 'Tweeter Auto Mute' function and bypass switch



XS400TC

XS400C

BASSMASTER XM SERIES AMPLIFIER SPECIFICATIONS:

Model	XM50C	XM100C	XM200C / XM200TC
Continuous Avg.Pwr@Min. Impedance	50W	100W	200W / 200W
Minimum Impedance (Ohms)	4	4	2 / 2
Burst Power (2 Cycle)	85W	115W	250W / 250W
Speaker Configuration - Bass	1x10"	1x15"	1x15" / 2x10"
Speaker Configuration - H.Freq	NA	NA	Tweeter / Tweeter
Internal Speaker Power (Program)	50W	100W	200W / 250W
Internal Speaker Impedance (Ohms)	4	4	4 / 4
Input Sensitivity (0dB/-6dB)	25mV	25mV	25mV / 25mV
Sensitivity - Effect Return	-	1Vrms	1Vrms / 1Vrms
Line Out (Type/Config)	XLR Bal/Switchable Pre/post EQ	XLR Bal/Switchable Pre/post EQ	XLR Bal/Switchable Pre/post EQ
Sensitivity - Line Out	1Vrms	1Vrms	1Vrms
Extension Spkr Out / Location	No	No	Yes / Rear
Headphone Jack	Yes	Yes	Yes
Effects Loop / Location	No / -	Yes / Front	Yes / Front
Limiter / Switchable	No / No	No / No	Yes / Yes
Graphic EQ (10 Band)	No	No	No
Tone Controls	3way - B/M/T	3 way - B/M/T	4 way - B/LM/HM/T
Mid Enhancement	Yes - Variable Scoop Control	Yes - Variable Scoop Control	Yes - Variable Scoop Control
Dimensions (DWH - in.)	12 x 13 x 17	13 x 17.5 x 20	14.5 x 21 x 23.5 / 13.25 x 21 x 21
Dimensions (DWH - cm)	30.5 x 33 x 44	33 x 44.5 x 51	37 x 53.5 x 60 / 34 x 53.5 x 53.5
Weight (lbs/kg)	30 / 13.5	50.5 / 23	60.5 / 27.5 / 65 / 29.5

Specifications subject to change without notice.

BASSMASTER XS SERIES AMPLIFIER SPECIFICATIONS:

Model	XS400C	XS400TC
Continuous Average Power (@4ohms)	400	400
Burst Power (2 Cycle)	725	725
Minimum Impedance (Ohms)	4	4
Frequency Response (Hz +/- 3dB)	20 - 20000	20 - 20000
Hum and Noise (dB)	-90dB Unweighted / -94dB Aweighted	-90dB Unweighted / -94dB Aweighted
Input Circuit	Tube	Tube
Inputs	2 x 1/4-inch (0 and -6dB)	2 x 1/4-inch (0 and -6dB)
Input Sensitivity (0 / -6dB)	40mV	40mV
Tubes / Type	Yes / 12AX7 in preamp section	Yes / 12AX7 in preamp section
Drive Circuit / Controls	Parallel tube drive / gain and drive / clean blend control	Parallel tube drive / gain and drive / clean blend control
Compressor / Controls	Yes / Adjustable threshold trim with activity LED	Yes / Adjustable threshold trim with activity LED
EQ	5 band EQ with semi-parametric Mid	5 band EQ with semi-parametric Mid
Tone Shaping	Sweepable contour control	Sweepable contour control
Effects Loop / Controls	Yes / Effects return wet/dry balance control	Yes / Effects return wet/dry balance control
Line Out (Type / Config)	XLR Balanced / Selectable pre or post	XLR Balanced / Selectable pre or post
Footswitch / Function	Optional / Drive on/off, Effects return mute	Optional / Drive on/off, Effects return mute
Speaker Configuration - L.F.	15-inch / 250W	2 x 10-inch / 300W
Speaker Configuration - H.F.	Piezo Tweeter / 70W	Piezo Tweeter / 70W
Speaker Outputs	2 x 1/4" + 1 Speakon™	2 x 1/4" + 1 Speakon™
Internal Speaker Impedance	8	8
Other Features	Selectable Auto Tweeter Mute in Drive Mode Tuner Mute / Selectable current limiter Amplifier Input	Selectable Auto Tweeter Mute in Drive Mode Tuner Mute / Selectable current limiter Amplifier Input
Protection	Thermal / Short Circuit	Thermal / Short Circuit
Dimensions (DWH - in)	15.5 x 21 x 22.5	15.5 x 22.5 x 23
Dimensions (DWH - cm)	40 x 54 x 57	40 x 57 x 58
Weight (lbs/kg)	80 / 36.3	86 / 39

Specifications subject to change without notice.



XS400H RACKMOUNTABLE BASS HEAD

Perfect for the player that wants all of the great XS series features, but wants to run their own cabinet combinations, the XS400H is the answer. This head has the same innovative tube dual input stage with separate parallel tube clean and tube drive circuits as the combo versions, delivered in a two-space rackmount package. The same front panel wet / dry control for the effects return, footswitchable drive, footswitchable effects return and a pre / post selectable XLR balanced DI output are standard equipment, and the front panel tuner output with system mute switch kills the signal to the rig (and DI output) for tuning, and mutes your system between sets.



The XS400H works with any of the XC extension bass cabinets from Yorkville Sound, including the XC410, or when combined with XC210 and XC115 for an extended bass rig.

XS800H THE NEXT GENERATION XS SERIES HEAD

What truly sets the XS800H apart from the rest of the class is its versatile input circuitry that allows the player to select between an all tube input signal path, or bypass the tube completely and use a FET driven solid-state input circuit. True tube overdrive can be added to either 'clean' signal path you choose, using an innovative balance control that allows the player to set the perfect blend of overdriven to clean signal. This ensures the player can add as much drive or as little 'tube warmth' as needed while maintaining the definition and clarity of the clean tone. A solid-state power stage ensures pure ample clean power at the output.

Innovative tone-shaping controls like 'Scoop' and 'Resonance' are standard on the XS800H as well as a compressor with user definable threshold and user defeatable output limiter. A five-band EQ, with semi-parametric mid, ensures the XS800H user can find any tone they need.

The scoop function sweeps from a flat frequency response through a mid-frequency dip at 400 Hz. As you increase beyond the 1/2-way point on the control you begin to boost both the top end and bottom end to your tone, in addition to further reducing the midrange level.

The unique Resonance Control, when used with a high quality and responsive loudspeaker, allows the player to dial in the exact bass response from their rig that they want to hear, from a tight and punchy tone to a looser, more vintage bass sound. The Resonance control actually controls the damping factor of the amplifier's output stage, and allows the player to take full advantage of the tone of a loudspeaker enclosure.

A dual fan cooling system integrated into the XS800H ensures the head will not overheat even under the most extreme set or session while keeping fan noise to a minimum. A front panel tuner / mute switch is standard on the XS800H head. This mute kills the signal to the amplifier (and DI output) for tuning, and mutes the rig between sets.

Other professional features added to the XS800H include highly visible VU metering, a front panel wet / dry control for the effects return, footswitchable drive, footswitchable effects return with front panel effects blend control and a pre / post selectable XLR balanced DI output with ground lift. Speakon™ extension speaker cabinet outputs have been added in addition to the 1/4-inch phono jacks commonly used on instrument amplifiers.

All metal chassis, quality component selection including glass epoxy circuit boards ensure long life and unmatched dependability. Like all Yorkville products, the XS800H is North American made and is covered in the United States and Canada by a two year unlimited warranty*.

*Unlimited warranty valid in the United States and Canada only.



AMPLIFIER SPECIFICATIONS:

Model	XS400H	XS800H
Continuous Average Power (@4ohms)	400	800
Burst Power (2 Cycle)	725	1000
Minimum Impedance (Ohms)	4	2
Frequency Response (Hz +/- 3dB)	20 - 20000	20 - 20000
Hum and Noise (dB)	-90dB Unweighted / -94dB Aweighted	-90dB Unweighted / -94dB Aweighted
Input Circuit	Tube	Tube or Solid State
Inputs	2 x 1/4-inch (0 and -6dB)	2 x 1/4-inch (0 and -6dB)
Input Sensitivity (0 / -6dB)	40mV	80mV
Tubes / Type	Yes / 12AX7 in preamp section	Yes / 12AX7 in preamp section
Drive Circuit / Controls	Parallel tube drive / gain and drive / clean blend control	Parallel tube drive / gain and drive / clean blend control
Compressor / Controls	Yes / Adjustable threshold trim with activity LED	Yes / Adjustable threshold trim with activity LED
EQ	5 band EQ with semi-parametric Mid	5 band EQ with semi-parametric Mid
Tone Shaping	Sweepable contour control	Sweepable contour control / Resonance
Effects Loop / Controls	Yes / Effects return wet/dry balance control	Yes / Effects return wet/dry balance control
Line Out (Type / Config)	XLR Balanced / Selectable pre or post	XLR Balanced / Selectable pre or post / GND Lift
Footswitch / Function	Optional / Drive on/off, Effects return mute	Optional / Drive on/off, Effects return mute
Speaker Configuration - L.F.	-	-
Speaker Configuration - H.F.	-	-
Speaker Outputs	2 x 1/4" + 1 Speakon™	2 x 1/4" + 2 Speakon™
Internal Speaker Impedance	-	-
Other Features	Tuner Mute / Selectable current limiter Amplifier Input / Carry handles Rackmountable	Tuner Mute / Selectable clip limiter / VU meter Amplifier Input / Carry handles Rackmountable
Protection	Thermal / Short Circuit	Thermal / Short Circuit
Dimensions (DWH- in)	15.5 x 19 x 3.5	13 x 19 x 5
Dimensions (DWH- cm)	39 x 48 x 9	33 x 48 x 13
Weight (lbs/kg)	29.5 / 13.4	25 / 11.3

Specifications subject to change without notice.

Traynor YBA200 ALL-TUBE BASS HEAD

This North American built all-tube 200-watt bass head stays true to its vintage roots.

In true Traynor tradition there are no semiconductors in the signal path, glass epoxy circuit boards, solid plywood box construction, good component selection and an all-metal chassis ensure years of unmatched reliability. We're so sure of the design and of our manufacturing prowess that we cover the YBA200 with a two-year unlimited warranty*.



The Traynor YBA200 is powered by four Sovtek 6550WE power tubes amplifying the two Sovtek 12AX7 and one 12AU7 that make up the preamp section. Basic controls you'd expect to see appear on the front panel, including input gain, master volume control and a three-band master EQ section. You'll also see we've added innovative new tone shaping features like Scoop, 'Range', and 'Resonance'.



The Scoop knob sweeps from a flat frequency response to a mid-frequency dip at 400 Hz and can be completely bypassed by a separate front panel scoop on/off switch. The Range control shifts the overall tone shape and general tonal characteristics of the master EQ section of the amp.

The unique Resonance Control, when used with a high quality and responsive loudspeaker enclosure, like the Traynor YBX1510, allows the player to dial in the exact bass response from their rig that they want to hear, from a tight and punchy tone to a looser, more 'vintage-tube' sound. The Resonance control actually controls the damping factor of the amplifier's output stage, and allows the player to take full advantage of the tone of his loudspeaker enclosure.

The YBA200 has high and low level 1/4-inch inputs, a 1/4-inch tuner output with a switchable mute function that mutes the entire rig and kills the DI output when tuning. The front panel mounted XLR D.I. output has a one-touch ground lift, a 20dB pad and is switchable pre or post EQ.

The use of toroidal transformers reduces the weight of the YBA200 to 41 pounds, much lighter than any other all-tube high-power bass amps in this class.



**Unlimited warranty valid in the United States and Canada only.*



AMPLIFIER SPECIFICATIONS:

Model	YBA200 Tube Bass Head
Continuous Average Power	200
Burst Power (2 Cycle)	280
Minimum Impedance (Ohms)	4 / 8
Frequency Response (Hz +/- 3dB)	25 - 20000
Hum and Noise (dB)	-80dB Unweighted
Inputs	2 x 1/4-inch (0 and -6dB)
Input Sensitivity (0 / -6dB)	50/100mV
Tubes / Type	Yes / 4 x 6550WE / 2 x 12AX7 / 1 x 12AU7
Drive Circuit / Controls	-
Compressor / Controls	-
EQ	3 band EQ
Tone Shaping	Range / Scoop
Effects Loop / Controls	Yes / Pre-amp output & Power amp input
Line Out (Type / Config)	XLR Balanced / Selectable pre or post
Footswitch / Function	-
Speaker Configuration - L.F.	-
Speaker Configuration - H.F.	-
Internal Speaker Impedance	-
Other Features	Tuner output with Mute / Fan cooled -20dB pad & Groundlift on DI output Flexible Range tone shaping control
Protection	Fuse (6.3A)
Dimensions (DWH - in)	11.5 x 22.5 x 10
Dimensions (DWH - cm)	29 x 57 x 25
Weight (lbs/kg)	41 / 18.5

Specifications subject to change without notice.



BASSMASTER EXTENSION CABINETS

All Yorkville extension loudspeaker cabinets are made with a reinforced solid plywood cabinet construction because we believe using MDF (medium density fiberboard) or particleboard for bass cabinets isn't conducive to a long rattle-free life or great bass tone. A full metal grille protects the high quality custom designed speaker components used in all Yorkville Bass cabinets. Built for years of rugged use and unmatched dependability, we are so sure of our design and manufacturing prowess and our careful attention to detail that we cover all Yorkville extension speakers with a two year unlimited warranty*.

**Unlimited warranty valid in the United States and Canada only.*



XC210

The XC210 offers tremendous punch with a degree of compactness that makes its performance seem even more outstanding. This is no "Mid" box. The XC210 stands alone as a bottom end source featuring deep-excursion tens and compression driver enhanced definition. Best of all it fits in your trunk or on the back seat of your compact car with room to spare. An L-Pad on the horn allows the player to dial in exactly the amount of high-end presence required for every application.



XC410

Things have changed since the sixties when Yorkville introduced the 410 cabinet for bass. Today, the XC410's enclosure tuning and deep-excursion speakers deliver a deeper, bigger punch. To ensure definition, we added a rugged compression driver capable of spelling out every nuance of your playing. An L-Pad on the horn allows the player to dial in exactly the amount of high-end presence required for every application.



XC808

Eight high power handling long excursion 8-inch speakers in a tuned enclosure with a 70-watt Motorola tweeter make the 800-watt XC808 a force to be reckoned with. More bottom end than you'd believe possible from 8-inch speakers, incredible definition, and an L-Pad on the tweeter allows every player to dial in exactly the amount of high-end presence required for every application. Compact cabinet design, solid plywood construction and an all-metal grille make the XC808 as tough as it looks.



XC115

Compact and very efficient, the XC115 offers tons of bottom end without breaking your back or the bank. Careful attention to driver design as well as optimum enclosure parameters ensures that the XC115 will reproduce every note with equal projection. A 1-inch compression driver with L-pad control makes the XC115 the perfect single cabinet solution for full range bass guitar output. Use it alone or fit it under a XC210 or XC410 for extra thump.



XC115XC

Designed to nestle directly under the XM200 or XM200T combos, the XC115XC adds bass efficiency to the list of essentials required by pros everywhere. Don't think this is merely an extension cabinet. Matched with the XM200C combo either singly or in pairs as a bass stack, the XC115XC builds a deep bass foundation that is second to none from cabinets that are this compact.

BASSMASTER CABINET SPECIFICATIONS:

Model	XC808	XC210	XC410	XC115	XC115XC
Speaker Configuration - Bass	8x8"	2x10"	4x10"	1x15"	1x15"
Speaker Configuration - H.Freq	70W Motorola Tweeter	1" Horn	1" Horn	1" Horn	-
Speaker Pwr. Handling (Program)	800W	300W	600W	300W	300W
Speaker Impedance (Ohms)	4	8	8	8	8
Frequency Response (+/- 3dB)	50Hz-15kHz	50Hz-10kHz	40Hz-15kHz	50Hz-20kHz	60Hz-5kHz
Dimensions (DWH - in.)	17 x 23 x 36	15 x 23 x 15.5	15 x 23 x 26	15 x 23 x 23	15 x 21 x 18
Dimensions (DWH - cm)	43 x 58 x 91	39 x 58 x 40	39 x 58 x 65	39 x 58 x 58	40 x 54 x 46
Weight (lbs/kg)	113 / 51.3	52 / 24	81 / 37	55 / 25	48 / 22

TRAYNOR YBX1510

The 400-watt Traynor YBX1510 bass enclosure is the perfect mate to the YBA200 bass head. Designed and tuned as a complete unit, the YBX1510 delivers more tone than any separate two-ten cabinet stacked with a single 15-inch box can provide.

The YBX1510 has two separate ported chambers in its enclosure; each tuned to compliment each other while taking specific advantage of their individual component's strengths. Loaded with a compression driver, a single 15-inch speaker as well as two 10-inch speakers, custom designed by Eminence specifically for this cabinet.

The YBX1510's two-ten section with the compression driver delivers clarity, definition and the majority of the bottom end, while the single 15-inch driver provides punch and low-mid presence. The compression driver has an L-pad volume control so as much or as little of the high frequency driver can be dialed in as required.

The cabinet is made with solid plywood box construction, frankly, because MDF or particleboard isn't conducive to long life and a great bass tone. A full heavy gauge perforated all metal grille protects the speaker components. We're so sure of the design and our manufacturing prowess that we cover it with a two year unlimited warranty*.

CABINET SPECIFICATIONS:

Model	YBX1510
Speaker Configuration - Bass	2x10" / 1x15"
Speaker Configuration - H.Freq	1" Compression Driver
Speaker Pwr. Handling (Program)	400W
Speaker Impedance (Ohms)	4
Frequency Response (Hz +/- 3dB)	20 - 15000
Dimensions (DWH - in.)	15 x 22.5 x 32.5
Dimensions (DWH - cm)	38 x 57 x 83
Weight (lbs/kg)	81 / 37



Traynor

K2 THREE-CHANNEL KEYBOARD AMPLIFIER

The all-new ultra-compact 200-watt Traynor K2 is the newest addition to the popular Keyboard amplifier line. Designed to outperform anything in its class, the K2 is the smallest keyboard amplifier to offer Traynor's innovative tube / solid-state input and proprietary Voicing circuitry first introduced on its big brother, the K4. This unique input design makes the Traynor K2 more than a monitor, but part of the keyboard player's tone pallet.

The Voicing circuit offers several pre-set user selectable tone shapes on channel one to add overall presence to further enhance specific synth sounds on the K2's first channel. The selectable tube or solid state input allows the player to select at pristine, high-headroom solid-state clean input on channel one, or a more warmer, slightly compressed tube circuit to add warmth to digital synths and samplers.

Channel two includes an XLR / 1/4-inch TRS combi-jack input, for an additional line or microphone level input, and has its own dedicated three-band EQ. The Traynor K2 includes a three-band master EQ for additional overall tone shaping, as well as a master volume control and 1/4-inch TRS balanced line output.

The compact K2 is also a convenient and powerful wedge monitor, designed for the live stage. Although it's small enough to fit easily under almost any keyboard rig, the 3-way speaker system delivers a full 200-watts to the stage, more than enough for most live applications. The innovative third channel post master input (located on the back of the K2) allows an additional signal to be fed to the amplifier, without feeding it to the pre-master line output. This allows sources like monitor feeds from the front of house mix, a drum machine click tracks or cue sends to be amplified on stage by the K2, without feeding them to the house mix.

Like all Traynor products, the K2 keyboard amplifier is covered by a two year unlimited warranty.*



AMPLIFIER SPECIFICATIONS:

Model	K2
Power @ min impedance (watts)	200
Frequency response (Hz +/-3dB)	20Hz - 20kHz.
Input channels	3 Mono
Channel 1 input select switch	switches between SS and Tube
Channel 1	2 X mono, 1/4" Jacks
Channel 1 controls	Gain
Channel 1 Voicing switch	5 preset voice settings
Channel 1 input sensitivity	500 mV
Channel 2	Combo Jack, XLR /1/4" input
Channel 2	RCA Jacks
Channel 2 controls	Gain, 3 tone controls
Channel 2 input sensitivity	500 mV
Channel 3 (monitor)	mono 1/4"
Channel 3 controls	Gain control
Master control	Yes, Gain, 3 tone controls
Amp out	no
Head Phones	yes (mono)
Line Out (type/configuration)	Yes, 1/4-inch Balanced post Eq, pre-master
LED indicators	Power, clip, Master clip
Line Out sensitivity	1Vrms
Protection	Thermal
Cooling	Heat sinks
L.F Woofer	10", 170 watt, Polypropylene with rubber surround
Tweeter	2.5", 20 watt, compression driver with horn
Midrange	4.0" Celestion 30 Watt midrange driver
Cabinet type	Tilt or upright cabinet
Dimensions (D,W,H, inches)	13 x 19 x 16
Dimensions (D,W,H, cm)	33 x 48 x 40
Weight	40 lbs/ 18 kg

Specifications subject to change without notice.

**Unlimited warranty valid in the United States and Canada only.*

TRAYNOR K4 KEYBOARD AMPLIFIER

Redefining Keyboard Amplification:

An innovative hybrid tube / solid-state input circuitry makes this combo amp more than a mere monitor, but part of the keyboard player's tone pallet.

The heart of the Traynor K4 is the Tube / Solid State input and Voicing circuitry on the main input channels. The tube drive can be used to add subtle warmth and 'fatness' to digital synths and samplers that often sound 'too pristine' in a mix. It can also be dialed up to add full-on tube overdrive, creating unique lead tones and ultra-fat bass sounds. The tube-drive's gain and lead boost level can be set from the K4's front panel, and engaged by an optional footswitch. The Voicing circuit tweaks channel one's EQ and overall presence for specific instruments and applications.

This 300-watt system uses a single 12-inch Eminence speaker to deliver 200-watts of bottom end in the K4's two point one configuration. Two additional 50-watt amplifier modules driving a 5 1/2-inch Celestion speaker and a 30-watt compression driver per side handle stereo midrange and high frequency program.

Designed for the stage, the modified trapezoidal shape of the K4 allows the amplifier to be used upright to fill the room or stage, or as a convenient wedge monitor for the player. The K4 keyboard amp's rugged plywood cabinet construction, metal chassis and all metal grille ensure unmatched reliability, and like all Traynor amplifiers, it is covered by a two year unlimited warranty.

The innovative fourth channel post master input located on the back of the amplifier allows additional signal to be fed to the amplifier on stage, without feeding the XLR balanced DI outputs. Sources like monitor feeds from the front of house mix, drum machine click tracks or cue sends can be amplified on stage by the K4, without feeding channel four to the house mix.

**Unlimited warranty valid in the United States and Canada only.*



AMPLIFIER SPECIFICATIONS:

Model	K4
Total Power:	300 Watts (200 Watts LF, 2 x 50 Watts H/M F)
Speaker Configuration:	1 x 12-inch 200 LF Speaker 2 x 5.5-inch 30 watt MF Speakers 2 x 30 watt HF Compression Drivers
Channel 1 Input:	4 x 1/4-inch TRS balanced (2 x Stereo Pairs)
Channel 1 Controls	Gain control Selectable Solid State or Tube input circuitry Channel Voicing 3-band Channel EQ Lead Gain Level Tube-Drive Gain Lead boost on / off
Channel 2 Inputs	2 x 1/4-inch TRS balanced (Stereo Pair) 1 x XLR balanced microphone
Channel 2 Controls	Gain Control 3-band Channel EQ
Channel 3 Inputs	2 x 1/4-inch TRS balanced (Stereo Pair) 2 x RCA unbalanced
Channel 3 Controls	Gain Control
Channel 4 Inputs	Stereo 1/4-inch Stereo Pair - Post Master Inputs (located on rear of amplifier)
Channel 4 Controls	Level control (located on rear of amplifier)
Master Section	Volume control Stereo XLR line output jacks w/ ground lift Lead boost footswitch jack 1 x 1/4-inch TRS headphone output 1 x 1/4-inch mono sub output jack
Dimensions (D,W,H, inches)	23.2 x 19.6 x 14.7
Dimensions (D,W,H, cm)	58.9 x 49.7 x 37.3
Weight (lbs/Kg)	50 / 22.6

Specifications subject to change without notice.





KEYBOARD AMPLIFIERS

Designed for working musicians who require rugged and highly portable equipment, the compact 'plug and play' keyboard amplifier line delivers the high fidelity needed to bring out the complex sounds of today's synths and samplers while faithfully reproducing acoustic-electric instruments and pre-recorded program music sources such as CD and DAT.

These rugged, great-sounding combo amplifiers stand up to life on the road. Careful attention to detail is taken during the design and manufacturing process. Inside every North American built KB Series amplifier you will find high-grade glass epoxy circuit boards, low-noise metal film resistors and phone jacks with gold plated contacts. Equipped with active filtering circuits for effective tone shaping with a minimum of knobs and switches, you will get the sound you want quickly and easily from any Yorkville keyboard amplifier, gig after gig, night after night.

Solid plywood cabinet construction ensure years of reliable rattle-free use while heavy gauge perforated curved metal grilles protect the speaker components. Add rigorous factory testing and our unbeatable two year (even if you break it) unlimited warranty* and you can be sure you've got what you need to reliably sound your best for many years to come.

**Unlimited warranty valid in the United States and Canada only.*

KEYBOARD AMPLIFIER FEATURES:

- Low distortion at high sound pressure levels.
- Rock solid plywood construction with rigid internal bracing.
- Curved, perforated 16 gauge, black painted metal grilles.
- Black carpet covering, easy-glide plastic feet.
- Low profile, integral carry handles.
- Thermal bias sensing protection.
- XLR, RCA and 1/4-inch phone jacks with gold-plated contacts.
- Active filtering circuits for simple, yet effective tonal shaping.
- High-grade glass epoxy circuit boards and low noise components.
- Chassis metal one to two gauges thicker than the competition's.
- Rubber-coated control knobs with a precise action and accurate feel.
- Loaded with high quality, custom-design speakers.
- Two year (even if you break it) unlimited warranty*
*(Valid in Canada and USA only).

200KB

The 200KB delivers professional features and sound in a compact format, 200 watt combo amplifier with a 15-inch, two-way speaker system. Yorkville combos sound much bigger than their appearance suggests, due to careful engineering and optimally matched components - the 200KB is no exception. Reliability is assured by the use of limiter protection circuitry in the amplifiers. The custom design woofer combines seamlessly with the 1-inch tweeter which is mounted on a small format, proprietary ABS horn.

All four input channels can be used simultaneously, thus taking advantage of a wide variety of input types including 1/4-inch, XLR and RCA connectors. Active bass and treble controls on channels one and two provide simple yet effective equalization. Channel one also includes a contour boost switch especially designed to improve clarity and projection when using piano sounds. The first three channels include effects controls to send signals to the rear-panel effects loop. Also on the rear panel are balanced XLR and 1/4-inch line-outs (post-EQ/pre-master) along with an extension speaker jack.

Designed with musicians in mind, the 200KB maximizes convenience by including a front-mounted effects loop and a headphone jack. Not only does the 200KB deliver great sound, it also looks great and will stand up to many years of abuse. Its elegant design includes black carpet covering, a perforated, curved metal grille, a carry handle, and a recessed control panel.





100KB

The 100KB combo amplifier delivers 100 watts of clean power into a specially optimized 12-inch speaker/horn combination. The cabinet sounds much bigger than its appearance suggests due to careful engineering and optimally matched components. Superior imaging has been achieved by transparently combining the custom design woofer with the 1-inch tweeter, which is mounted on a proprietary ABS horn. The 100KB has active bass and treble controls located in the master section, as well as individual level controls on each of its three channels, allowing effective equalization. The three input channels can be used simultaneously, thus taking advantage of a wide variety of input types including 1/4-inch, XLR and RCA connectors. Reliability is assured by the use of limiter protection circuitry in the amplifiers.

The 100KB includes an internal spring reverb with master reverb control, a front-mounted effects loop, headphone jack and 1/4-inch line output connector. Not only does the 100KB perform well, it also looks great and will stand up to many years of abuse. Its elegant design includes black carpet covering, a curved, perforated metal grille, a carry handle, and a recessed control panel.



50KB

For the professional keyboardist who needs a sub-compact amplifier, the 50KB is sure to fit the bill. Utilizing an advanced enclosure design developed during the design of the 'flagship' 200KB amplifier, this little wonder takes advantage of all 50 watts of power without falling short when it comes to great sound. The 50KB features two input channels accepting 1/4-inch, XLR or RCA inputs for maximum versatility. Roadworthiness is enhanced by a black carpet covering, a curved, perforated metal grille, a carry handle, and a recessed control panel.



100KW

The 100KW is a 12-inch speaker / tweeter loaded 100 watt powered wedge monitor and keyboard combo amplifier all in one. Two input channels that accept 1/4-inch, XLR or RCA inputs for maximum versatility. All the same great features and input specifications as the 50KB in a convenient 100 watt wedge monitor package.

50KW

All the same great features, specifications and power of the 50KB in a convenient and cost effective wedge monitor package.



AMPLIFIER SPECIFICATIONS:

Model	200KB	100KB	100KW	50KB	50KW
Cont. Avg. Power (PGM) @ Min. Impedance	200W	100W	100W	50W	50W
Minimum Impedance (Ohms)	2	4	4	4	4
Burst Power (2 Cycle)	225W	115W	115W	70W	70W
Speaker Configuration (Bass)	1x 15"	1x 12"	1x 12"	1x 10"	1x 10"
Speaker Configuration (HF)	1" Tweeter	1" Tweeter	1" Tweeter	Piezo Tweeter	Piezo Tweeter
Internal Speaker Power	150W	100W	100W	50W	50W
Internal Speaker Impedance (Ohms)	4	4	4	4	4
Input Channels (including Aux.)	4	3	2	2	2
Channel Config.	XP/XP/P/RR	XP/PRR/P	XP/PPRR	XP/PPRR	XP/PPRR
Sensitivity (Effect Return)	1 Vrms	1 Vrms	1 Vrms	1 Vrms	1 Vrms
Line Out (Type / Config.)	Bal 1/4" & XLR	UnBal 1/4"	UnBal 1/4"	UnBal 1/4"	UnBal 1/4"
Ext. Speaker Out / Location	Yes / Rear	No	No	No	No
Headphone Jack	Yes	Yes	Yes	Yes	Yes
Effects Loop / Location	Yes / Rear	Yes / Front	Yes / Front	Yes / Front	Yes / Front
Limiter	Yes	Yes	No	No	No
Tone Controls	2-Way (Channel)	2-Way (Master)	2-Way (Master)	2-Way (Master)	2-Way (Master)
Mid Contour	Yes	No	No	No	No
Reverb	No	Yes	No	No	No
Dimensions (DxWxH - inches)	14 x 22 x 22	14 x 17 x 19	19 x 17 x 19	12 x 15 x 17	17 x 15 x 17
Dimensions (DxWxH - cm)	36 x 56 x 56	36 x 43 x 48	48 x 43 x 48	30 x 38 x 43	43 x 38 x 43
Weight (lbs / kg)	61 / 27.7	37 / 17	40 / 18	22.5 / 10.3	24 / 11

Specifications subject to change without notice.





Traynor

TVM10

BATTERY POWERED AMPLIFIER



The Traynor TVM10 battery powered amplifier is designed for the musician on the move. Perfect for rehearsal or street corner concert, the TVM10's two-channel 15-watt design allows quick connection to any microphone, instrument or CD / MP3 player. Individual volume control on the input channels and four-band master EQ makes the TVM10 a complete and ultra-compact PA system solution.

XLR / TRS combi-jack input on channel one allows quick connection to any microphone source. A 1/4-inch input on channel two is ideal for any instrument including acoustic or electric guitars and keyboards. An additional RCA auxiliary Input allows quick connection CD or MP3 players.

The TVM10's wedge monitor shape projects to an intimate audience from ground level, or be used with its integrated stand adaptor on any speaker stand when used as a small announcement PA or background music source.

Like all Traynor products, the TVM10 is covered by a two year unlimited warranty.*

**Unlimited warranty valid in the United States and Canada only.*

- Channel One - XLR / 1/4-inch TRS Combi-jack Microphone Input with Volume Control
- Channel Two - 1/4-inch Line Input with Volume Control, ideal for any instrument
- Additional RCA Auxiliary Line Input for quick connection of any CD or MP3 player
- Master 4-Band Equalizer
- Built-In Rechargeable Battery Pack Power Source
- Unique wedge cabinet shape projects to an intimate audience from ground level, or allows the TVM10 to act as a wedge monitor for rehearsals
- Integrated Speaker Stand Adaptor - For connection to any standard speaker stand



OPTIONAL ACCESSORIES:

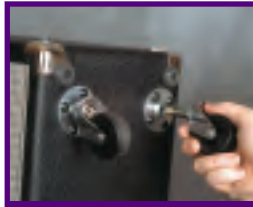
TRAYNOR AMPLIFIER COVERS

Nylon amp covers are available to protect the tolex or Nubtex finishes on the Custom Valve and YBX series amplifiers. Available in black nylon only.



YORKVILLE YC-4 CASTER KIT

The handy YC-4 caster kit is a must for the travelling musician. The four heavy duty removeable casters are rated at 20kg (44lbs) per wheel, or 80kg (176 lbs) for the set. The YC-4 kit comes with all the required hardware, including the sockets and can be easily user-installed in any Traynor YCV series guitar amplifier.



YORKVILLE INSTRUMENT AMPLIFIER STANDS

Yorkville offers a range of instrument amplifier stands designed to elevate your amp and put it at an ideal monitoring angle for live performances. Fixed or fully adjustable versions are available that have load capacities up to 100lb (45.5kg).



YORKVILLE INSTRUMENT CABLES

The importance of using quality shielded cables with any instrument / effects / amplifier combination cannot be overstated. Yorkville shielded Instrument and patch cables are designed to meet the physical demands of even the most enthusiastic of live performances. Manufactured to the highest quality control standard with superior connectors, conductors and a proven internal strain relief system ensure long life and dependability. Proper shielding, low capacitance and good insulation guarantee Yorkville cables offer superb noise rejection while maintaining a clear, accurate and transparent tone. Your sound will be free of cable induced noise and RF (radio frequency) interference.



YORKVILLE INSTRUMENT STANDS

Yorkville stands provide a safe and secure home for your guitar when you can't keep it in a case. A wide range of single, double and triple guitar stands for acoustic or electric instruments are available including models that will accommodate uncommon guitar shapes including Explorers and Flying Vs.



YORKVILLE KEYBOARD STANDS AND BENCHES

A wide range of single and double tier keyboard stands are available from Yorkville that will provide a solid foundation for your live (or studio) performances. A wide range adjustable stands are available for every style of synth or sampler up to full 88-note weighted action digital pianos and midi controllers.



TRAYNOR TT2 TUNER AND TT2M TUNER / METRONOME COMBO

The TT2M chromatic automatic digital tuner / metronome combination could be the handiest accessory in any musician's toolkit. The TT2M features an easy to read Liquid Crystal Display and bright LED's with a 1/4-inch line input for guitars and basses.

An integrated condenser microphone for non-pickup equipped instruments is standard, and the TT2M generates audible tuning tone. The metronome functions include variable tempo control from 40 to 216 beats per minute and has a variable downbeat indicator. It supports whole note, 1/4 note, 8th note, 16th note, swing and triplet feels.



The TT2 has all of the same features as the TT2M, less the metronome functions, making it an extremely cost effective tuner solution.

Both tuners support Chromatic mode and Standard Guitar and bass tuning modes. Flat and Double Flat modes make guitar drop tunings simple. These tuners calibrate from 'A' 435Hz to 'A' at 445Hz and feature an automatic power off for extended battery life.

TRAYNOR TTP CLIP-ON TUNER PICKUP

TTP clip on instrument pickup is available for Traynor TT1, TT2 and TT2M tuners. TTP makes tuning of any acoustic instrument easy, fast and accurate in any club or concert environment.



TRAYNOR TBL1 TILT-BACK LEG

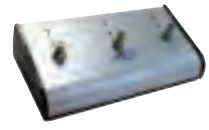
The TB1 Tilt-back kit is available for the Traynor AM150T AcousticMaster Amplifier. The kit comes complete with two legs and the mounting hardware. T-nut receivers are integrated into the AM150T so no retrofitting to the amplifier is required.



Optional TB1 Tilt-Back Leg Available

AFS-1, AFS-2 AND AFS-3 FOOTSWITCHES

Select Traynor International Series, BassMaster and DG Series amplifiers can be controlled by an external optional footswitch. The Traynor AFS1 single button footswitch will operate with the TGM20 and DG30 amplifiers while the Traynor DG60, TRM30 and TRM40 channel switch and reverb defeat can be controlled with an AFS2 dual button footswitch. An AFS3 three-button footswitch is also available for controlling amplifiers and effect units.



Inspiration + Innovation = Common Sense Solutions.

Pete Traynor and Jack Long joined forces in 1963. Jack, then the owner of a successful Toronto area music store, saw promise in Pete, a young bass player with unique skill as a repair man. Later, as it turned out, Pete could design things as well. His creative and innovative solutions to everyday problems faced by musicians led to some of the most successful products in our history. Some of those original Pete Traynor inventions still have direct descendants in our product line to this day. Products like our powered mixers, wedge monitors, compact lighting systems, and guitar amps with master volume control are all Yorkville innovations.

The products we make are built tough enough for the road, clean enough for the studio, and loud enough for any stage or concert hall. State-of-the-art technology is packaged into easy to use, great sounding products that are made for making music. Since the goal is often to be a musician, not a technician, our products have the features you need and the controls are always well thought out and clearly labeled.

Effective simplicity was the goal we set for our new line of amplifiers. Active filtering circuits allow effective tonal shaping with fewer knobs and switches. You get the sound you want quickly and easily from a Yorkville amp. Inside we use high-grade glass epoxy circuit boards, low noise metal film resistors and phone jacks with gold plated contacts. Outside you will find heavy-gauge curved metal speaker grilles, plywood construction and rugged carpet covering. Add rigorous factory testing and our unbeatable two year (EVEN IF YOU BREAK IT!) Unlimited Transferable Warranty* and you can be sure you've got what you need to reliably sound your best for years to come.

In keeping with our philosophy and reputation as an industry leader, Yorkville has a significant Internet presence. Check out our frequently updated website at www.yorkville.com. It contains a wealth of information about our products, links to other valuable sites, and related industry information we have gathered for your convenience and education. We firmly believe that a well-educated customer will appreciate the features and benefits of our products.

*Warranty valid in USA and Canada only.

Traynor



Yorkville Innovations

Since 1963, Yorkville has been a leader in design and innovation. You may be surprised to find that Yorkville first developed some of the products that are now considered standards in our industry. The first commercially available 24 channel mixer, the first tube guitar amp with a master volume control, the first commercially produced graphic EQ and the first wedge monitor are all Yorkville inventions. Shown here are some of Yorkville's most significant innovations along the long road that is our history.

Yorkville amplifiers and mixers are covered by the best warranty in the business - a two-year, unlimited (even if you break it!), transferable warranty* (valid in USA and Canada only). See our warranty card or website for details.



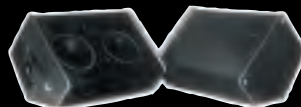
MX24 • circa '69
Our first 24 channel mixer, as well as the first ever, commercially produced, 24 channel sound reinforcement board.



YBA3a • circa '68
The most powerful bass amplifier of its day. This fan-cooled, portable package pumped out 250W.



EQ-1 • circa '73
The first commercially produced PA graphic equalizer.



YM-1 • circa '68
The first wedge-style stage monitor. It gave the user a choice of 3 facing angles (and upright mounting) and had a built-in volume control.



YSC-4 • circa '66
The first stand-mounted portable PA enclosure. It used four 12-inch full range drivers.



YSC-1 • circa '63
The first commercially produced PA column. It contained six full range 8-inch drivers and was designed to be easily transportable.



LS-1 • circa '67
The first commercially produced portable lighting system. It featured six colored flood lights and a switch console.



United States
Yorkville Sound Inc.
4625 Witmer Industrial Estate,
Niagara Falls, NY 14305
Phone: 716.297.2920
Fax: 716.297.3689

Canada
Yorkville Sound
550 Granite Court,
Pickering, Ontario L1W 3Y8
Phone: 905.837.8481
Fax: 905.839.5776